

PUERTO RICO

US VIRGIN ISLANDS

BARBADOS

TRINIDAD & TOBAGO

Eastern Caribbean
Health Outcomes Research Network

THIRD ANNUAL ECHORN Symposium

Verdanza Hotel
San Juan, Puerto Rico
March 12 - 14, 2014



Symposium Program

Supported by:
National Institute on Minority Health &
Health Disparities, NIH

Yale University
School of Medicine



Table of Contents

Introduction	4
Program at a Glance	5
Welcome Letters	6
General Information	15
Speaker Profiles	16
Program Schedule	17
Announcements.	21
Welcome Aboard & Farewell	22
Acknowledgments	23
Participants.	24
¡Bienvenidos a Puerto Rico!	25
Restaurants & Attractions	26
Year in Review	27



The Eastern Caribbean Health Outcomes Research Network (ECHORN) is a research collaborative that aims to improve the health of those living in the eastern Caribbean. The inaugural sites for ECHORN are Trinidad & Tobago, Barbados, the United States Virgin Islands, and Puerto Rico.

ECHORN's primary aims are:

1. Establishing a cohort of community dwelling adults to estimate prevalence of known and potential risk factors for diabetes, cardiovascular disease, and cancer.
2. Strengthening research capacity in the region through a series of research and leadership training activities. Activities include an online learning platform, learning exchange workshops, and symposia.
3. Disseminating research results in ways that make the information meaningful to policymakers and health professionals. Engaging local and regional leaders to create and strengthen policies around chronic disease.

Program at a Glance

Wednesday, March 12

5:30 pm	Registration	Aria
7:00-7:15 pm	Welcome Reception	Aria
7:00-10:00 pm	Welcome Dinner	Aria

Thursday, March 13

7:00-8:30 am	Registration	Opera
7:00-8:30 am	Breakfast	Opera
7:30-8:30 am	PI Meeting (closed)	Andante
8:30-8:40 am	Symposium Overview	Grand Opera
8:40-8:45 am	Welcome	Grand Opera
8:45-9:20 am	Greetings	Grand Opera
9:25-10:10 am	Keynote Address	Grand Opera
10:15-11:00 am	Site Presentations I	Grand Opera
11:15-12:15 pm	Research Panel Discussion	Grand Opera
12:15-1:15 pm	Lunch	Opera
1:15-2:15 pm	Site Presentations II	Grand Opera
2:15-2:45 pm	ECHORN Photo shoot	
2:45-3:45 pm	RAPID Mentoring Session: Group I (closed)	Ristretto, Opera
2:45-3:45 pm	RAPID Mentoring Session: Group II (closed)	Andante, Opera
2:45-3:45 pm	RAPID Mentoring Session: Group III (closed)	Adagio, Opera
2:45-3:45 pm	CRN Meeting (closed)	Cadenza
2:45-3:45 pm	RA/PM Meeting (closed)	Grand Opera
4:00-4:30 pm	ECC/USVI Meeting (closed)	Cadenza
4:00-6:00 pm	ECHORN Networking + Mentoring Sessions	Various Rooms

Friday, March 14

7:00-8:00 am	Breakfast	Opera
8:00-10:00 am	Network Building Activity	Grand Opera
10:00-10:30 am	Closing Activity & Farewell (all but sites are free to go)	Grand Opera
Closed sessions for sites only		
10:45-11:45 am	RA/PM Meeting (closed)	Grand Opera
10:45-12:30 pm	Site PI Meeting (closed)	Andante
10:45-11:45 am	JRF Meeting (closed)	Adagio
11:45-12:30 pm	Lunch for Sites	Opera
11:45-12:30 pm	MoP Committee Meeting Lunch	Opera
12:30-1:00 pm	ECC/Trinidad Meeting (closed)	Cadenza
1:05-1:35 pm	ECC/Barbados Meeting (closed)	Cadenza
1:40-2:30 pm	ECC/Puerto Rico Meeting (closed)	Cadenza

2014

ECHORN SYMPOSIUM

Welcome Letters



Eastern Caribbean Health Outcomes Research Network
www.echorn.org

Yale SCHOOL OF MEDICINE

ECHORN Members

University of Puerto Rico
University of the Virgin Islands
University of the West Indies
Cave Hill
University of the West Indies
St. Augustine
Yale University

Dear ECHORN Family & Guests,

Welcome to the Third Annual ECHORN Symposium! The beautiful backdrop of Puerto Rico is the perfect setting to observe our 'midway' milestone. Everyone rolled up their sleeves after a rainy Miami and remained committed after sunny St. Thomas. The Steering Committee recognizes the countless hurdles the teams have surmounted to date and congratulates all five of the sites on the successful completion of the rigorous pilot studies and on starting participant cohort enrollment.

Our symposium focuses on mentorship and innovative approaches to problem solving. ECHORN has enthusiastically stretched the original grant aims to include a formal mentorship arm, aligning with our ongoing capacity strengthening activities. We have had wonderful success with our Research and Projects in Development (RAPID) sessions, a platform for ECHORN-affiliated junior research faculty to receive feedback on their ideas from our principal investigators and faculty advisory board members. This past year we welcomed our inaugural ECHORN fellow, Charlotte-Paige Rolle. As you may recall from the January issue of our newsletter, KeyNotes, the ECHORN fellowship is an experiential learning opportunity for post-doctoral fellows designed to expose participants to the organizational leadership skills and strategies necessary to become effective independent investigators. Fellows are paired with site research teams and receive mentorship from a site principal investigator and the ECHORN principal investigator. This year Charlotte was paired with ECHORN:Trinidad & Tobago and ECHORN:Barbados. She also spent time at the ECC.

This year's unique symposium elements include targeted mentorship for ECHORN-affiliated junior research faculty. They will have the opportunity to work with two or three specially selected senior research faculty members to brainstorm how to advance their independent research projects. We also welcome local researchers as guest speakers this year for a special Research Panel Discussion. Panelists will present innovative strategies they have used to combat the challenges of research on topics relevant to the Caribbean region, from research development to findings dissemination.

With data collection and cohort enrollment well underway, we look ahead in our next year to transition planning. We will turn our attention to disseminating our early findings and novel strategies, finalizing approaches for cohort retention, designing follow-up data collection instruments, and seeking support to extend ECHORN's reach and contributions beyond 2016. We also look forward to Learning Exchange Workshops across the sites and we enthusiastically anticipate an ECHORN/GHLI convening of high-level policy delegations from all of the sites in summer 2015.

Finally, I want to extend a personal thank you to the entire ECHORN Coordinating Center and to the ECHORN:Puerto Rico team for organizing and hosting this event. Thank you to the National Institute on Minority Health and Health Disparities for their continued support. Thank you also to the distinguished guests from Puerto Rico who are able to participate in this year's Symposium and to each of you for making ECHORN special.

Warmly,

Marcella Nunez-Smith, MD, MHS
Principal Investigator, ECHORN
Chair, ECHORN Steering Committee

Section of General Internal Medicine (YSM)
Chronic Disease Epidemiology (YSPH)
Robert Wood Johnson Foundation Clinical Scholars Program
Global Health Leadership Institute
Yale Center for Clinical Investigations





Department of
Biostatistics and
Epidemiology

Mailing Address:

PO Box 365067
San Juan, PR
00936-5067

Telephone:

787-758-2525
Exts. 1400, 1427

Fax: 787-764-5831

Home Page:

<http://isp.rcm.upr.edu>



UNIVERSITY OF PUERTO RICO, MEDICAL SCIENCES CAMPUS
FACULTY OF BIOSOCIAL SCIENCES AND GRADUATE SCHOOL OF PUBLIC HEALTH



Welcome from the ECHORN-Puerto Rico Team

Johan Hernández, Cruz María Nazario and Rosa Rosario extend our welcome to the "Third Annual Symposium of the Eastern Caribbean Health Outcomes Research Network (ECHORN)" to be celebrated on March 12 to 14, 2014 in Carolina, Puerto Rico. As hosts of the Third Annual Symposium we are promising a wonderful meeting where all ECHORN members will enjoy Puerto Rico's hospitality. It is going to be a stimulating gathering to promote learning from sharing experiences and knowledge.

The alarming rising trend of most chronic diseases, such as the ones that ECHORN will be studying in the Caribbean, is the motivation to evaluate the factors that could explain such patterns of disease. The diversity of the population in the Caribbean nations, offers the opportunity to increase our knowledge on those risk factors as well as the prospect of identifying those factors that offer protection from them. The ECHORN project will be the forerunner for future studies in the Caribbean.

By the end of the Third Symposium, we will make sure that you have sampled our Puerto Rican Caribbean way of living and will have increased your Spanish vocabulary, at least in the names of different Puerto Rican dishes (but with probably similar ingredients to your island dishes): mofongo, piña colada, arroz con pollo, etc.

Welcome to Puerto Rico!

Sincerely,

Cruz M. Nazario, PhD
Principal Investigator, Puerto Rico Site Team

The Only School of Public Health in Puerto Rico Accredited by the Council on Education for Public Health

February 12, 2014

Dear ECHORN Family:



The University of Puerto Rico is honored to be the host of the 3rd Annual ECHORN Symposium which is organized by the ECHORN (Eastern Caribbean Health Outcomes Research Network) Coordinating Center at Yale University, and the University of Puerto Rico. The University of Puerto Rico is the island's state University with three main campuses and eight University Colleges. The University of the West Indies, at Cave Hill Campus, in Barbados, the University of the West Indies, at St Augustine campus in Trinidad and Tobago, and the University of the Virgin Island, US Virgin Islands, are members of ECHORN research project.

ECHORN'S efforts directed towards the generation of new knowledge on chronic conditions prevalent in this region and in our population and health risks related to them, such as diabetes, cancer, and cardiovascular disease, greatly enhance and support the mission of our university as it relates to public health in Puerto Rico and the Caribbean. Of equal value are the strategies for developing in Puerto Rico and the Caribbean outcomes leadership capacity in the health services arena, one of ECHORN's main goals. Non-communicable chronic diseases increase morbidity and mortality rates and diminish the quality of life of our population. Knowledge gaps related to these conditions need to be addressed in order to better understand the underlying variables and factors that mediate quality of health services and help improve health outcomes across the region, as well as increase research capacity and infrastructure within the region. Through the partnership of ECHORN with affiliate universities the prevalence of known and potential risk factors associated with the development of heart disease, cancer, and diabetes in the Eastern Caribbean will be established. Research findings will have direct implications for health policy in Puerto Rico and the Caribbean and for health inequities research and policy in the continental United States.

This Symposium will further the goals of ECHORN, as it will help inform participants and the community about research findings that will help counter health disparities and improve QOL for the population of our region. The work of ECHORN and the affiliate universities is of extraordinary importance and it is with great pleasure that I welcome researchers and all participants to the 3rd Annual ECHORN Symposium.

Best Regards,


Uroyoán R. Walker-Ramos, Ph.D.
President

Central Administration
Jardín Botánico Sur
1187 Calle Flamboyán
San Juan, Puerto Rico
00926-1117
(787) 250-0000
Fax (787) 759-6917



It is with great pleasure that I extend greetings and congratulations to the members, health professionals and guests of the Eastern Caribbean Health Outcomes Research Network (ECHORN) on the occasion of the 3rd Annual ECHORN Symposium.

I would like to congratulate ECHORN on the initiative to conduct research and educate the Caribbean community on risk factors for non-communicable diseases such as diabetes, cancer and cardiovascular disease. Your cross-island, multi-site research and capacity building alliance with Yale University and other academic health profession institutions across the Eastern Caribbean such as the University of the West Indies, Cave Hill Campus, Barbados, University of the West Indies, St Augustine, Trinidad and Tobago, University of the Virgin Island, US Virgin Islands, and the University of Puerto Rico will serve to generate new knowledge on these diseases and improved health outcomes.

Diabetes, cancer and heart disease are major health issues in Puerto Rico. We share encourage ECHORN to improve health outcomes across the Caribbean and increase research capacity and infrastructure throughout the region. The Caribbean region will benefit from the knowledge generated form ECHORN multi-site research alliance affiliation. We hope that the University of Puerto Rico collaboration with ECHORN will result in a learning network that others in the world will strive to emulate.

On behalf of the Medical Sciences Campus of the University of Puerto Rico, I offer best wishes for continued success and a productive conference.

Sincerely,

A handwritten signature in black ink, appearing to read 'Edgar Burgos'.

Edgar Colón Burgos, MD
Interim Chancellor
University of Puerto Rico Medical Sciences Campus



Oficina del Decano
Office of the Dean

Dirección Postal:
Postal Address:

PO Box 365067
San Juan, PR
00936-5067

Dirección Física:
Physical Address:

Principal Building
Office A-403
4th Floor
Medical Center Area
Rio Piedras, PR 00935

Teléfono:
Telephone:

787-758-2525
Exts. 1401, 1402, 1403

Fax: 787-759-6719

Página Electrónica:
Home Page:

<http://sp.rcm.upr.edu>



Patrono con Igualdad
de Oportunidad en el
Empleo M/M/V/I

Equal Employment
Opportunity Employer
M/W/V/H

UNIVERSIDAD DE PUERTO RICO, RECINTO DE CIENCIAS MÉDICAS
FACULTAD DE CIENCIAS BIOSOCIALES Y ESCUELA GRADUADA DE SALUD PÚBLICA

UNIVERSITY OF PUERTO RICO, MEDICAL SCIENCES CAMPUS
FACULTY OF BIOSOCIAL SCIENCES AND GRADUATE SCHOOL OF PUBLIC HEALTH

February 6, 2014

Dear ECHORN Family:

It is our pleasure to welcome you to Puerto Rico and the University of Puerto Rico Graduate School of Public Health. We are honored to be a partner in this important research and that our island was selected to host the 2014 meeting of ECHORN. This important research project is central to addressing the challenge of the chronic diseases such as diabetes, hypertension, cancer and other non-communicable diseases in the Caribbean basin. Understanding what are the effective strategies for prevention that are tailored to our region and diverse population is essential to addressing these conditions. ECHORN is also contributing to strengthening partnerships with colleagues in other institutions of higher education through this research collaboration.

The UPR Graduate School of Public Health is proud to be a partner in ECHORN and we are committed to support and promote this and future collaborative endeavors. We have common goals and priorities in promoting healthy living and prevention of chronic diseases in our diverse populations. This Symposium will offer an opportunity to exchange new ideas and strengthen the efforts of developing a Caribbean cohort that through their follow up will shed new knowledge that will translate into a healthier population in the entire region.

We at the Graduate School of Public Health wish you great success and a very enjoyable visit to Puerto Rico.

Sincerely,

José F. Cordero, MD, MPH
Dean

La única Escuela de Salud Pública en Puerto Rico acreditada por el Consejo de Educación en Salud Pública
The only School of Public Health in Puerto Rico accredited by the Council on Education for Public Health



UNIVERSIDAD DE PUERTO RICO, RECINTO DE CIENCIAS MÉDICAS
FACULTAD DE CIENCIAS BIOSOCIALES Y ESCUELA GRADUADA DE SALUD PÚBLICA



Departamento de
Bioestadística y
Epidemiología
Department of
Biostatistics and
Epidemiology

February 7, 2014

Dirección Postal:
Mailing Address:

PO Box 365067
San Juan, PR
00936-5067

Teléfono:
Telephone:

787-758-2525
Exts. 1400, 1427

Fax: 787-764-5831

Página Electrónica:
Home Page:

<http://sp.rcm.upr.edu>

Dear Symposium Participants:

On behalf of the Department of Biostatistics and Epidemiology, Graduate School of Public Health of the University of Puerto Rico, we are greatly honored and pleased to welcome the participants of the 3rd ECHORN Symposium.

ECHORN is not only a very important research project to increase the knowledge on risk factors for most chronic diseases among our communities that will allowed to translate scientific evidence into policy and practice to prevent and improve the quality of life of our populations but also, and very important, it is contributing to the establishment of strong relationships with other researchers in the Caribbean.

The Symposium will also offer the opportunity to participants to learn about Puerto Rico and identify the similarities among our Caribbean islands. We wish you great success in the 3rd ECHORN Symposium.

Sincerely,


Gilberto Ramos Valencia, DrPH
Director



Patrono con Igualdad
de Oportunidad en el
Empleo M/M/V/I

Equal Employment
Opportunity Employer
M/M/V/H

Es la única Escuela en Puerto Rico acreditada por el Council on Education for Public Health
The Only School of Public Health in Puerto Rico Accredited by the Council on Education for Public Health



National Institute on Minority Health
and Health Disparities
6707 Democracy Boulevard
Suite 800 MSC 5465
Bethesda, Maryland 20892-5465

February 12, 2014

Dear Symposium Participants,

The National Institute on Minority Health and Health Disparities (NIMHD) joins with the ECHORN Coordinating Center and ECHORN: Puerto Rico in welcoming you to the third annual ECHORN Symposium.

At NIMHD, we are acutely aware of the challenges still ahead in eliminating health disparities among racial and ethnic minority populations. Yet we remain optimistic that the contributions of critical research endeavors, such as ECHORN, will reveal the answers we seek. ECHORN can play a vital role in understanding and addressing health disparities involving cancer, diabetes and cardiovascular disease in these populations. ECHORN remains responsive to NIMHD's global health disparities priority area and we are pleased to support this cooperative agreement. Expanding NIMHD's collaboration with all of you, Dr. Irene Dankwa-Mullan has recently joined the ECHORN Steering Committee as a NIMHD Research Scientist. She joins Drs. Nathan Stinson, Jr. (NIMHD Research Scientist) and Jennifer Alvidrez (NIMHD Program Official).

ECHORN is an innovative and dynamic collaboration; this partnership will help lead the way on scientific research to improve strategic health planning within the Caribbean region. During this year's symposium, the network will have the opportunity to learn about some of the innovative strategies local researchers have used to translate their work into policy and practice at the population level. This opportunity will work to increase the network's impact on minority health and health disparities, particularly as your efforts transition from data collection to dissemination and translation of research data at the halfway mark of this project.

Since its inception, ECHORN has shown a great commitment to making positive contributions to the health of people and to the research capacity of healthcare professionals living in the Caribbean. We are pleased with this commitment and with your many accomplishments. All of us at NIMHD look forward to the dissemination of your findings and ECHORN's future directions

Sincerely,

John Ruffin, PhD

Director, National Institute on Minority Health and
Health Disparities

March 12, 2014

I am pleased to extend warm greetings to all the participants of the third annual ECHORN Symposium, taking place in Isla Verde, Puerto Rico. It has been my pleasure to serve alongside you as a member of the ECHORN Steering Committee.

As Director of the Global Health Concentration at the Yale School of Public Health, past-chairman of the board of PAHEF, and through my ongoing work with UNICEF, FAO, the World Health Organization and the USA Centers for Disease Control and Prevention I am fully aware that the advancement of public health relies heavily on working with partners to address key health, education and training priorities based on the type of evidence that ECHORN is working on generating. These and other key organizations work on a number of health topics, but currently their attention has turned to the issue of obesity and chronic diseases. At the Third Pan American Conference on Obesity held in Aruba in June 2013, I continued the discussions started at the second annual ECHORN Symposium on adopting a maternal-child life course approach to obesity prevention in the Americas. At that meeting I specifically talked about the importance of building research capacity and fostering high quality workforce development for implementing the diagonal approaches required to prevent obesity and properly manage chronic diseases. And yes! I did mention ECHORN as a prime example of how to go about building this capacity in the Region.

As a Steering Committee member I continue to bring my expertise in the areas of public health, nutrition and food security to bear on the research aspects of the project. Specifically, I will use my knowledge in nutrition and food security to help you develop rigorous strategies to capture and analyze data collected on eating habits and household food insecurity in the Eastern Caribbean. In years to come, I will use my experience and knowledge working in addressing health disparities through community health worker models, to help you highlight your findings to entities interested in improving health outcomes for racial/ethnic minority populations.

I applaud you on your efforts to date and look forward to a continued fruitful partnership.



Rafael Pérez-Escamilla, PhD
Professor of Public Health
Chair, Global Health Concentration, Yale School of Public Health
Past-Chairman of the Board, Pan American Health and Education Foundation (PAHEF)
Chair, Global Nutrition Council, American Society for Nutrition

Yale University

Global Health Leadership Institute
2 Whitney Avenue, Suite 401
P.O. Box 208364
New Haven, CT 06520-8364

Telephone: 203 785-2937
Fax: 203 785-6287
E-mail: elizabeth.bradley@yale.edu

March 12, 2014

Dear Symposium Participants,

It is a great pleasure to welcome you to the third annual Symposium of the Eastern Caribbean Health Outcomes Research Network (ECHORN). Congratulations on another great year of collaborative research and capacity strengthening across the Eastern Caribbean. The Global Health Leadership Institute (GHLI) considers this partnership to be an important part of our global health portfolio. I continue to be an enthusiastic collaborator in my role as ECHORN Steering Committee member.

GHLI's goal is to create and sustain synergies in global health research, education and practice. Our faculty and staff use a multidisciplinary approach to achieve comprehensive solutions for projects both in the U.S. and around the world. In the Eastern Caribbean, we hope that GHLI will serve as a resource for translating scientific evidence into policy and practice, collaborating on problems that are locally relevant but regionally generalizable.

This past year we had the great opportunity to begin work with a delegation to the GHLI Conference from Trinidad & Tobago. The delegation is co-led by Drs. Rohan Maharaj, site Principal Investigator for ECHORN:Trinidad and Dr. Marcella Nunez-Smith, ECHORN Principal Investigator. It includes representatives from the Trinidad & Tobago Ministry of Health and regional stakeholders, the Pan American Health Organization (PAHO) and the Caribbean Community Secretariat (CARICOM) and GHLI faculty and staff. Currently, the delegation is working on a plan to strengthen the data collection infrastructure across the islands of Trinidad & Tobago, with specific focus on non-communicable diseases. By designing this approach with a regional perspective in mind, we hope that the solutions will be ready for use by other islands across the region as well.

It has been a pleasure working with the Trinidad & Tobago delegation and other ECHORN members this past year. I continue to be impressed with your commitment to building research capacity to inform a regional, evidence-based approach to ensuring health. The entire GHLI team looks forward to our continued exploration and growth together.



Elizabeth H. Bradley, PhD
Professor of Public Health
Faculty Director, Global Health Leadership Institute

General Information

General Statement of Symposium Purpose

The Third Annual ECHORN Symposium is being convened in an effort to engender career development and research networking opportunities for all members of the ECHORN research collaborative.

This third symposium features activities and presentations that highlight innovative strategies used to combat the challenges of research, from research development to dissemination of findings. Illustrations in approaches to problem solving come from local Caribbean researchers, as well as senior research faculty within the ECHORN network.

The symposium also includes role specific meetings and sessions that will increase network knowledge on research implementation strategies and tools and strengthen capacity within the ECHORN collaborative. This year, special attention will be paid to leadership training and mentorship. Network members will have the opportunity to meet with senior research faculty to discuss career goals, research projects, and potential learning opportunities.

Objectives: At the completion of the symposium, we anticipate participants will:

- Gain knowledge in research strategies and practices used in the Caribbean
- Gain knowledge on the ECHORN biobanking protocol and tracking system
- Ensure quality and standardization of clinical procedures across sites through a mock session

CME Accreditation & Designation Statement	No AMA PRA Category 1 Credits have been designated for the activities at the third annual ECHORN Symposium
Disclosure Policy	There are no financial conflicts of interest or commercial support
Venue	The Verdanza Hotel, Isla Verde, Puerto Rico
Registration Schedule	March 12: 5:30-6:45pm, Aria; March 13: 7-8:30am, Opera
ID Badges	ID badges will be provided to all participants upon check-in. ID badges are required to participate in all symposium activities
Meeting Rooms	Aria, Grand Opera, Opera, Ristretto, Andante, Adagio
Internet Access	Complimentary wireless internet access is available in meeting rooms and public areas
Dress Code	Business casual

Speaker Profiles

Keynote Speaker

Dr. José Gabriel Rigau Pérez currently holds faculty appointments at the University of Puerto Rico in the Schools of Public Health and Medicine and the Humanities Department. He has worked as a medical epidemiologist for close to 30 years in various departments of health in Puerto Rico and the United States, the National Institutes of Health, and with the Centers for Disease Control and Prevention (CDC).

He began his career with the CDC in 1983 as a medical epidemiologist assigned to the Puerto Rico Department of Health. In his time with the CDC, Dr. Rigau Pérez contributed to a variety of research, administrative, and training efforts. Notable is his work to identify and eliminate turtle-associated salmonellosis as a cause of infant diarrhea in Puerto Rico and his work to document the progress, in Puerto Rico, towards achieving the “1990 Health Objectives for the Nation.” He has also published numerous descriptive and analytic epidemiologic studies on the frequency and distribution of dengue in Puerto Rico and led CDC investigations for dengue outbreaks in Nicaragua, El Salvador, Hawaii, and Puerto Rico. In 2003, he received the CDC/ATSDR Honor Award for Contributions to Minority Health Research and Surveillance - Dengue Branch

Dr. Rigau Pérez has dedicated his work to bettering the health outcomes for Puerto Ricans. This is evidenced by his work to improve communicable disease surveillance in Puerto Rico as well as his work in HIV prevention, control, and treatment. As an example, he assisted in the development of the first treatment trials for AIDS in children. He has published over ninety (90) peer reviewed articles, produced numerous government and international publications and contributed chapters to several books.

Panel Speakers

Cynthia M Pérez-Cardona is a professor in the department of biostatistics and epidemiology at the Graduate School of Public Health, University of Puerto Rico. Her research interests are in the areas of nutrition, chronic disease, and women’s reproductive health. She has recently looked at the association between hypertriglyceridemic waist phenotype, prediabetes, and diabetes mellitus among adults in Puerto Rico.

Erick Suárez is a professor in the department of biostatistics and epidemiology at the Graduate School of Public Health, University of Puerto Rico. His research interests are in the areas of bioinformatics, population studies, non-communicable disease, and health disparities. Most recently, Dr. Suárez looked at the incidence of oral cavity and pharyngeal cancers by anatomical sites in population-based registries in Puerto Rico and the United States.

Carmen E. Albizu-García is a professor in health services evaluation, at the Graduate School of Public Health, University of Puerto Rico. Her research focuses on substance use and abuse, mental health, and vulnerable populations such as inmates. Most recently, Dr. Albizu-García’s research focused on the correlates associated with unipolar depressive disorders in a Latino population.

Clemente Díaz is a professor in pediatrics at the University of Puerto Rico School of Medicine and the associate director of the R-25 CRECD Post-Doctoral Masters in clinical and translation research. Her research interests are in the areas of HIV transmission and treatment in women and infants and diversity in the workforce. Recently, Dr. Díaz analyzed data from the Women and Infants Transmission study to present findings on the CD4/CD8 ratio for diagnosis of HIV infection in infants. In 2011, Dr. Díaz co-authored a paper describing the University of Puerto Rico Medical Sciences Campus’ School of Health Professions and School of Medicine’s efforts to train Hispanics who will address minority health and health disparities research through a multidisciplinary post-doctoral master of science in clinical research.

Other Speakers

David Berg

David Berg is an organizational psychologist who has spent 35 years teaching about and working with organizations. His work is focused on multi-party collaboration, i.e. how groups develop the capacity to work together especially in the face of current and historical barriers to this collaboration. He has also taught about leadership and followership, maintaining effective boundaries in organizations and group dynamics.

Program Schedule

Wednesday, March 12

ECHORN MEET & GREET

5:30-6:30 pm | Aria

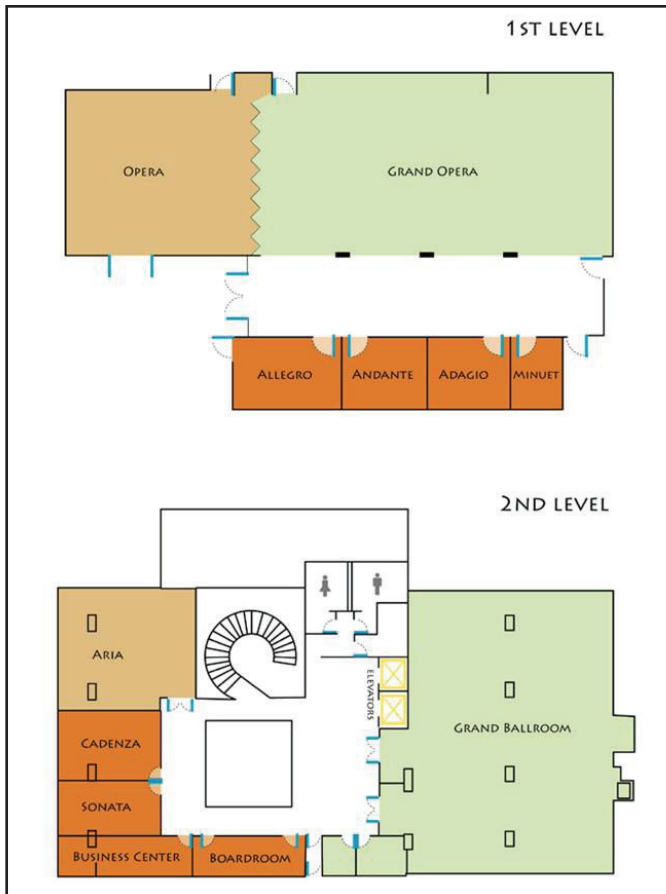
REGISTRATION

Presenter: Dr. Terri-Ann Thompson, ECC

7:00-10:00 pm | Aria

WELCOME DINNER

Presenters: Dr. Terri-Ann Thompson, ECC
Dr. Cruz Nazario, ECHORN: Puerto Rico



Meeting Rooms



Schedule continued on next page

Program Schedule continued

Thursday, March 13

NETWORKING DAY

7:00-8:30 am | Opera

BREAKFAST & REGISTRATION

7:30-8:30 am | Andante

SITE PI MEETING

8:30-8:40 am | Grand Opera

SYMPOSIUM OVERVIEW

Dr. Terri-Ann Thompson, ECC

8:40-8:45 am | Grand Opera

WELCOME

Dr. Marcella Nunez-Smith,
Steering Committee

PRESENTATIONS

8:45-9:20 am | Grand Opera

GREETINGS

Dr. José Seguinot Barbosa,
Interim Dean of the Graduate
School of Public Health

Dr. Edgar Colón Burgos,
Interim Chancellor of the Medical
Sciences Campus, University of
Puerto Rico

Dr. Uroyoán R. Walker Ramos,
University of Puerto Rico President

Mr. Daniel Redon,
Director of Economic Development
of Carolina (representing the
Mayor of Carolina)

9:25-10:10 am | Grand Opera

KEYNOTE ADDRESS

Dr. José Rigau Pérez,
Medical Epidemiologist (retired),
Centers for Disease Control
and Prevention

“Puerto Rico – its history and
international context according to
an epidemiologist”

10:15-11:00 pm | Grand Opera

ECHORN PROGRESS
UPDATES I

ECHORN: Puerto Rico
ECHORN: Trinidad & Tobago

15 MIN BREAK

Program Schedule continued

Thursday, March 13 CONTINUED

PRESENTATIONS CONTINUED

11:15-12:15 pm | Grand Opera

RESEARCH PANEL DISCUSSION

Dr. Cynthia Pérez, Professor,
Biostatistics and Epidemiology

Dr. Erick Suárez, Professor,
Biostatistics and Epidemiology

Dr. Clementine Díaz, Professor,
Pediatrics, School of Medicine

RESEARCH PANEL DISCUSSION
continued

Dr. Carmen Albizu García, Professor,
Health Services Administration

Panelists will provide examples
of strategies for combating the
challenges of research, from start to
dissemination of findings

12:15-1:15 pm | Opera

OPEN LUNCH

1:15-2:15 pm | Grand Opera

ECHORN PROGRESS
UPDATES II

ECHORN: USVI
ECHORN: Barbados
ECHORN: ECC

2:15-2:45 pm | Grand Opera

ECHORN PHOTO SHOOT

Round I: Site Pis
Round II: Sites
Round III: ECC/ECC+
Round IV: FAB
Round V: Network

MEETINGS

2:45-3:45 pm | MEETINGS

RISTRETTO, OPERA

RAPID Mentoring Session: Group I

ANDANTE, OPERA

RAPID Mentoring Session: Group II

ADAGIO, OPERA

RAPID Mentoring Session: Group III

CADENZA

CRN Meeting

GRAND OPERA

RA + PM Meeting

15 MIN BREAK

4:00-4:30 pm | Cadenza

ECC + ECHORN: USVI MEETING

4:00-6:00 pm

ECHORN MENTORING &
NETWORKING SESSION

ROOMS:

Opera
Grand Opera
Ristretto
Andante
Adagio

Program Schedule continued

Friday, March 14

TEAM BUILDING

7:00-8:00 am | Opera

BREAKFAST

8:00-10:00 am | Grand Opera

LEADERSHIP + FOLLOWERSHIP

Dr. David Berg, FAB

10:00-10:30 am | Grand Opera

CLOSING ACTIVITIES

Dr. Terri-Ann Thompson, ECC
Dr. Cruz Nazario, ECHORN: PR
Dr. Marcella Nunez-Smith, Steering
Committee

Friday, March 14

SITES ONLY MEETINGS

10:45-11:45 am | MEETINGS

GRAND OPERA
RA + PM Meeting

ADAGIO
JRF Meeting

10:45-12:30 pm | MEETINGS

ANDANTE
Site PI Meeting

11:45-12:30 pm | Opera

LUNCH

MoP Committee Meeting

SITE + ECC MEETINGS

12:30-1:00 pm | Cadanza

ECC + ECHORN: TRINIDAD

1:05-1:35 pm | Cadanza

ECC + ECHORN: BARBADOS

1:40-2:30 pm | Cadanza

ECC + ECHORN: PUERTO RICO

Announcements

ECHORN Website

The ECHORN website is new and improved! Please visit us at www.echorn.org

The new website features:

- General information about ECHORN
- ECHORN News
- Information on ECHORN members
- A participant page

ECHORN Newsletter

The ECHORN Coordinating Center has launched the ECHORN newsletter, KeyNotes! KeyNotes features exciting news about the ECHORN network and updates from sites on their latest developments. KeyNotes also showcases editorials on subjects relevant to ECHORN research, such as chronic diseases, health migration, and regional policy developments. KeyNotes will be issued every September/October, January/February, and June/July.

Fourth Annual ECHORN Symposium

The Fourth Annual ECHORN Symposium will be held in Barbados in April/May 2015. Stay tuned for further details.

ECHORN now on Facebook

The ECHORN Facebook page is a part of our social media campaign. The page is meant to increase the size of our audience, increase knowledge of ECHORN and its aims, and increase opportunities for collaboration. So take a moment to visit the page, recommend the page to others, and most of all, 'like us' on Facebook.

2015 Global Health Leadership Institute Conference

The 2015 Global Health Leadership Institute (GHLI) Conference will focus on the eastern Caribbean. Delegations from all four ECHORN sites will work with faculty and leadership from GHLI to develop strategic solutions to locally and regionally relevant priorities.

Welcome Aboard & Farewell

¡Bienvenido!
We Glad Yuh Come
Welcome Aboard

The following persons have joined the ECHORN Network. We are pleased to have them on board.

- Charlotte-Rolle Paige, ECHORN Fellow, ECHORN: Trinidad
- Hema Singh, Research Assistant, ECHORN: Trinidad
- Marcel Lindsey, Research Assistant, St. Croix, ECHORN: USVI
- Damaris Faustine, ERIC Center Coordinator, ECC+
- Rebecca Fine, ERIC Junior Research Assistant, ECC+

¡Adiós!
Walk Good
Will Be Missed

The following persons have transitioned out of the ECHORN Network. We say congratulations and wish them the very best in their new venture.

- Anne Thurland, Research Assistant-St. Croix, ECHORN: USVI
- Paula Nunes, Junior Research Faculty, ECHORN: Trinidad
- Lydia Robles, Research Assistant, ECHORN: Puerto Rico

Acknowledgments

This symposium would not be possible without the efforts and contributions of ECHORN: Puerto Rico and members of the ECC and ECC+. Symposium planning requires great attention to detail and numerous meetings to discuss matters, small to large. Thank you all for making the time for these meetings, for sending numerous letters, sourcing venues, preparing materials, and thinking about the symposium long after official work hours.

I would like to thank Dr. José Rigau, Dr. Pérez, Dr. Suárez, Dr. García, Dr. Díaz and Dr. Berg who led some of our symposium sessions and activities. The network has benefited greatly from the information and wisdom you shared. To our senior research faculty members, who offer great mentorship to our junior researchers, a big thank you! Thanks to Tara Rizzo and Damaris Faustine who were gracious enough to work as staff during the event.

Thanks also go to the Puerto Rico Community Advisory Board (CAB) members for not only offering their services to team Puerto Rico but for joining us at the symposium.

Finally, thanks to everyone who attended the third annual ECHORN symposium. Your presence and active participation continues to make these annual symposia a success.



Terri-Ann Thompson
Director, ECHORN Coordinating Center

Participants

STEERING COMMITTEE

Marcella Nunez-Smith
marcella.nunez-smith@yale.edu

PUERTO RICO

Cruz Nazario
cruz.nazario@upr.edu

Rosa Rosario Rosado
rosa.rosario1@upr.edu

Johan Hernandez
johan.hernandez@upr.edu

Barbara Guzman
Barbara.guzman@upr.edu

Nilda Gonzalez
Nilda.gonzalez1@upr.edu

PR COMMUNITY ADVISORY BOARD

Alejandro Cotté Morales

Carmen González

Cynthia Román

Luis A. Berdiel

Melba Sánchez Ayendez

Miriam Ramos

Ruth Ríos Motta

FACULTY ADVISORY BOARD

David Berg
david.berg@yale.edu

Leslie Curry
leslie.curry@yale.edu

Mayur Desai
mayur.desai@yale.edu

Rosana Gonzalez-Colaso
rosana.gonzalez-colaso@yale.edu

Erika Linnander
erika.linnander@yale.edu

Calie Santana
casantan@montefiore.org

Lisa Walke
lisa.walke@yale.edu

Emily Wang
emily.wang@yale.edu

Yawei Zhang
yawei.zhang@yale.edu

ECHORN COORDINATING CENTER

Terri-Ann Thompson
terri-ann.thompson@yale.edu

Johanna Elumn
johanna.elumn@yale.edu

Katina Gionteris
katina.gionteris@yale.edu

Teresa Sandoval-Schaefer
teresa.sandoval-schaefer@yale.edu

Arian Schulze
arian.schulze@gmail.com

ECC+

Carol Oladele
carol.oladele@yale.edu

Gerneiva Parkinson
gerneiva.parkinson@yale.edu

Rebecca Fine
r.fine@yale.edu

Damaris Faustine
damaris.faustine@yale.edu

Uriyoan Colon-Ramos
uriyoan@gmail.com

US VIRGIN ISLANDS

Maxine Nunez
mnunez@live.uvi.edu

Amy Schweizer
aburlar@uvi.edu

Gwenevere Creque
gwenevere.creque@live.uvi.edu

Celia Nurse
senoritac138@yahoo.com

Shirley Rymer
nurserymer@yahoo.com

Marcel Lindsey
konohamare@gmail.com

Angela Isaac
treat2eat@yahoo.com

Shane Griffen
srgriffen@hotmail.com

TRINIDAD & TOBAGO:

Rohan Maharaj
rohan.maharaj@sta.uwi.edu

Hyacinth Chow
hyacinth.chow@sta.uwi.edu

Hema Singh
hssingh21@yahoo.com

Patsy Wickham
patsywick@yahoo.com

Cynthia Frederick
cynthiafrederick46@yahoo.com

BARBADOS

Peter Adams
peter.adams@cavehill.uwi.edu

Euclid Morris
euclid.morris@cavehill.uwi.edu

Celia Greaves
celia.greaves@cavehill.uwi.edu

Ryan Hall
ryan.hall@cavehill.uwi.edu

Cynthia Clarke
Clarkecynthia53@yahoo.com

Elma Payne
elma_payne@hotmail.com

¡Bienvenidos a Puerto Rico!



WELCOME TO PUERTO RICO!

On November 19, 1493, the Tainos and Arawaks who inhabited the territory called Boriken or Borinquen (“land of the great lord”) discovered that Christopher Columbus had arrived on the island.

Puerto Rico has a strong mix of cultures including the Tainos and Arawaks, Africans, and Spanish that is reflected in the way Puerto Ricans talk, cook, dance, and enjoy life. Besides the slaves imported from

Africa, other ethnic groups brought to work on the plantations joined the island’s racial mix. Spanish peoples from Spain and South America, as well as French families from both Louisiana and Haiti, fled to Puerto Rico during the early 1800s. When the United States acquired the island in 1898, American influence was added to its culture. During the mid 19th century, Chinese workers were imported to build roads, followed by workers from Italy, France, Germany, and Lebanon. The most significant new immigrant populations arrived in the 1960s from Cuba and the Dominican Republic.

The Commonwealth of Puerto Rico is an unincorporated territory of the United States, located in the northeastern Caribbean, east of the Dominican Republic and west of both the U.S. Virgin Islands and the British Virgin Islands. The island is 100 miles long by 35 miles wide, and is the smallest island of the Greater Antilles. Puerto Rico consists of an archipelago that includes the main island of Puerto Rico and several islands: Vieques, Culebra, Mona, and numerous islets. San Juan, the capital of Puerto Rico with a population of two million, is also Puerto Rico’s main port of entry. There are 78 municipalities, further subdivided into barrios, and those into sectors.

Spanish and English are the official languages, but Spanish is dominant. Puerto Ricans integrated thousands of Taíno words (for example, *casabe* and *bohío*), adopted some pronunciation habits from African dialects, and incorporated English words or phrases (known as “Spanglish”) into the language.

The new and the old merged, creating an island of sharp contrasts. Puerto Ricans are fiercely proud of their island and their culture, calling themselves “Puertorriqueños” or “Boricuas.” We love our country and we also like to emphasize our loyalty to our culture, folklore, hospitality, and way of life. The mingling of flavors passed from generation to generation among the different ethnic groups that settled on the island has resulted in the exotic blend of today’s Puerto Rican cuisine.

Our national bird is La Reina Mora (*Spindalis portoricensis*), the national flower is La Flor de Maga (*Thespesia grandiflora* or *Maga grandiflora*), and the national tree is La Ceiba (Silk-cotton tree or *ceiba pentandra*). While the coquí—a tiny frog found everywhere in the island—is only an “unofficial national symbol,” its image figures prominently in Puerto Rican culture. When Puerto Ricans want to express their nationality, they say: Soy de aquí como el coquí (I’m as Puerto Rican as a coquí).

Interesting Fact

Puerto Ricans are known for their warm hospitality, often considered very friendly and expressive to strangers. Greetings are often cordial and genuine. When people are first introduced, a handshake is usual, however, close friends and family members always greet you hello or goodbye with a kiss on the cheek or a combination hug and kiss. Puerto Ricans are best known for using lively hand and facial gestures, as hand and body language are important forms of communication.

Restaurants & Attractions

Isla Verde

Ponderosa

Calle Tartak Carolina, 00979
Phone: 787.791.2582
Cuisine: Steak & seafood

Chili's Restaurant

Cll Diazway Carolina
Cuisine: American & Tex-Mex

Ikebana Sushi Bar

Isla Verde Ave Los Gobernadores #2
Phone: 787.253.1705
Cuisine: Japanese

Metropol

Avenida Los Gobernadores, Carolina
Phone: 787.791.5585
Cuisine: Cuban & Puerto Rican

La Playita Restaurant & Bar

6 Calle Amapola
Phone: 787.791.1115
Cuisine: Mediterranean

Old San Juan

Restaurant Raices

315 Recinto Sur Street
Phone: 787.289.2121
Cuisine: Puerto Rican

Restaurant El Jibarito

280 Calle Sol
Phone: 787.725.8375
Cuisine: Caribbean & Puerto Rican

Inaru Restaurant

Recinto Sur #311
Phone: 787.724.7384
Cuisine: European & Latin American

Al Dente's

309 Recinto Sur Street
Phone: 787.723.7303
Cuisine: Italian

ATTRACTIONS

The Verdanza Hotel enjoys an excellent location near Isla Verde, Old San Juan, and Condado. It is also within walking distance of Isla Verde Beach and shops and restaurants.

Condado: Luxury area

Location: Near Old San Juan
<http://www.condadoinsider.com/restaurants>

This area has several hotel (moderate and luxury), shops, and restaurants (for all budgets).

Outside of San Juan Area

El Yunque Caribbean National Forest

<http://welcome.topuertorico.org/reference/yunque.shtml>

Named after the benevolent Indian spirit Yukiyú, El Yunque is the only rain forest in the U.S. National Forest System. Hike through El Yunque and enjoy the views and waterfalls.

Cabezas de San Juan Nature Reserve

<http://paralanaturaleza.org/ripercuoto-eng.html>

The Cabezas de San Juan Nature Reserve is a natural area with dry forests, sea grass beds, mangroves, and laguna. The visitors can view several exhibitions about the reserve's ecosystems. Near is the Fajardo Lighthouse, where visitors can enjoy impressive views of the northeastern tip of Puerto Rico from the viewing platform.

Camuy Cave River Park

<http://welcome.topuertorico.org/city/camuy.shtml>

The world's third largest underground cave system.

Arecibo Ionospheric Observatory

<http://www.naic.edu/general/>

The Arecibo Radio Telescope is the largest of its kind and one of the most important research facilities on the globe. The huge dish could fit over a dozen football fields and sits in a sinkhole, forever aimed at the sky, tuned to detect the slightest sounds emitted by the farthest stars.

2014

ECHORN SYMPOSIUM

Year in Review



2014

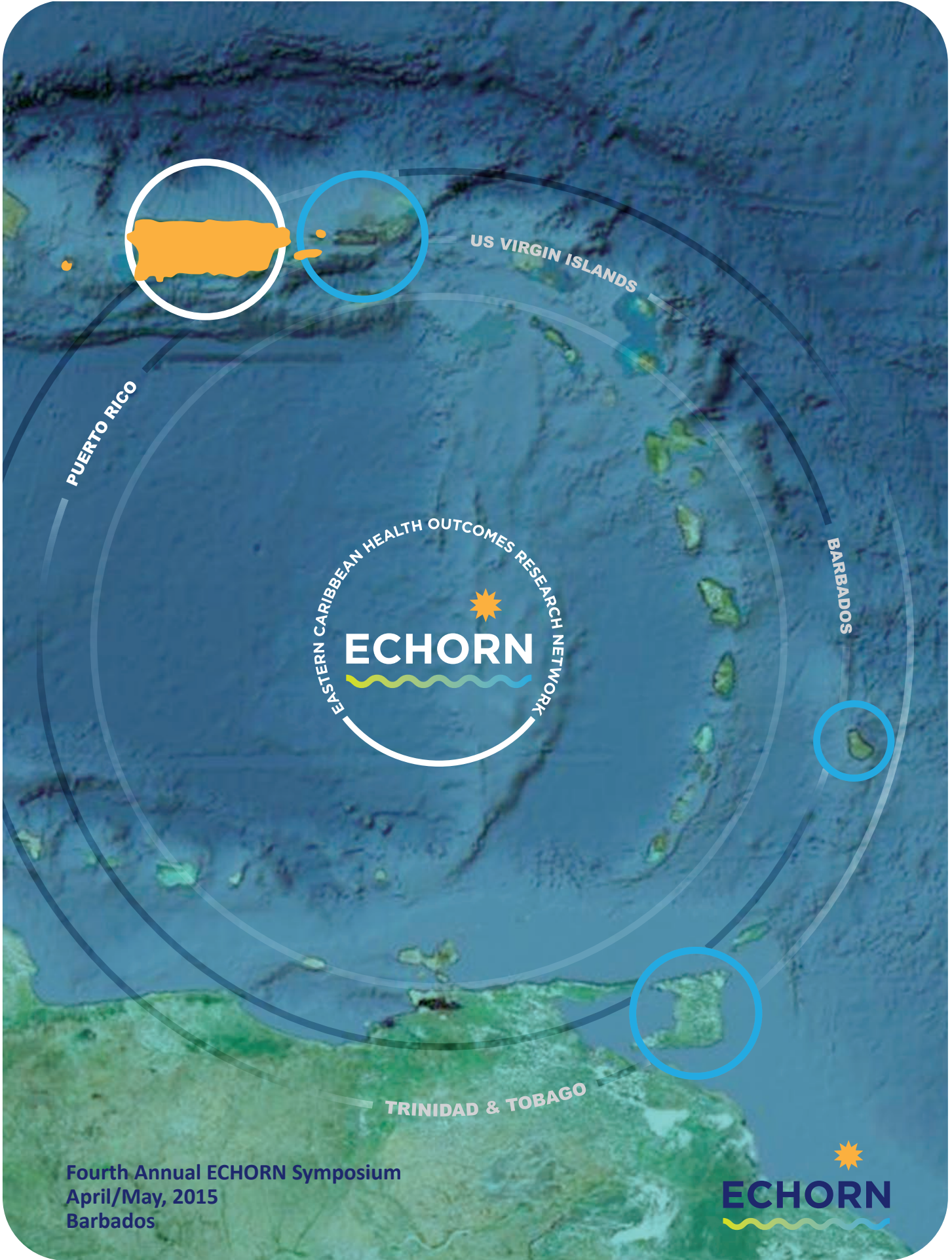
ECHORN SYMPOSIUM

Year in Review Continued





The Equity Research and Innovation Center (ERIC), led by Marcella Nunez-Smith, has been newly created to reduce health and healthcare inequities through the development and dissemination of evidence based models. ERIC will also provide research support and training for Yale faculty and affiliated community based organizations. ECHORN is one of the innovative projects within the ERIC portfolio. Stay tuned for more information as we officially launch ERIC in 2014!



Fourth Annual ECHORN Symposium
April/May, 2015
Barbados

